



E. ZEPPELIN

A. EINSTEIN

G. GALILEI

J. SALK

PTE. ILLIA

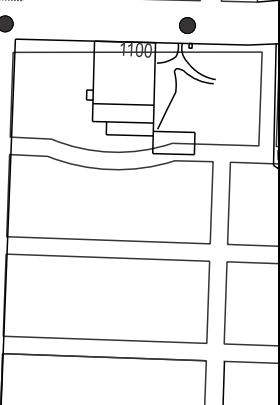
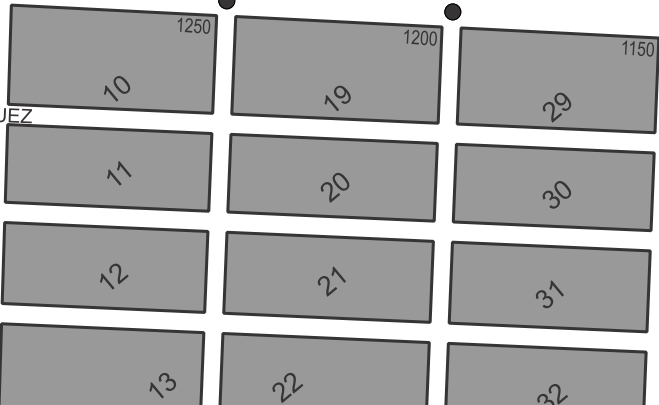
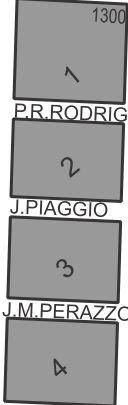
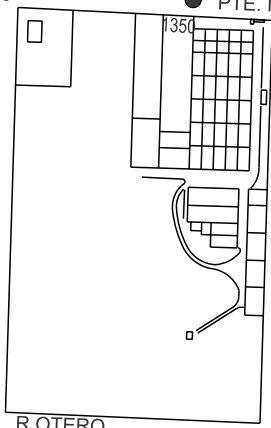
1400

124

134

144

154



R. OTERO

V

LAS PALMAS

VI

J.R. NUNEZ

VII

M. ROJAS

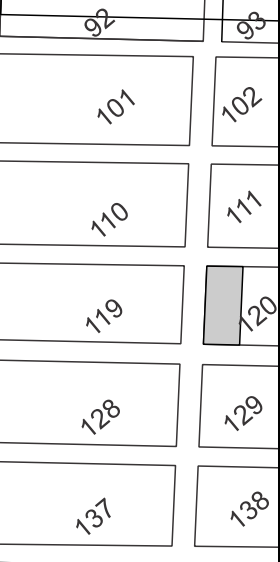
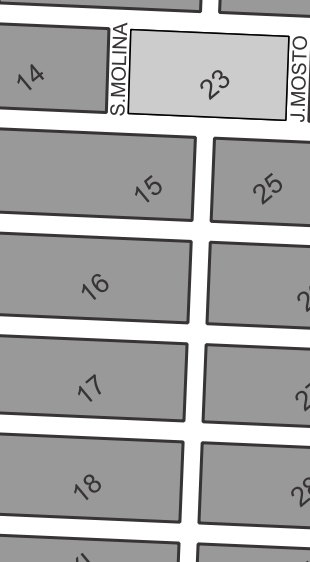
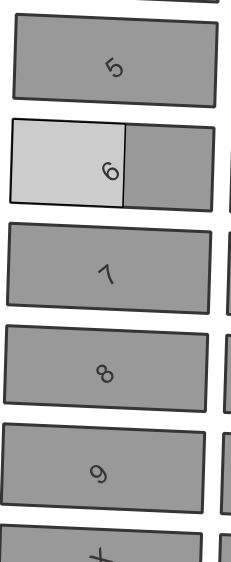
VIII

M.A. MARTINEZ

IX

CHACABUCO

XIV



MONTENEGRO

GIL MEDINA

R. MIRO

M. PIÑERO

ZARACONDEGUI

MORENO

M. PIÑERO

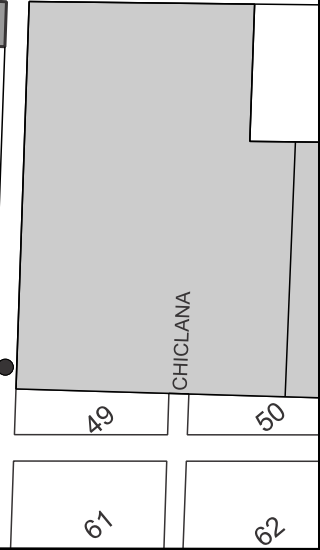
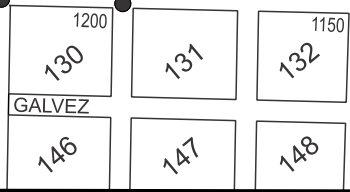
B. AIRES

CHICLANA

1250

1200

1150



SECTOR NORTE: BARRIO SAN MARTIN

Municipalidad de San Nicolás